

S A G E 5 0 0 E R P 2 0 2 6

Release Notes

Version 8.40.1

Product Update 1

Sage Software, Inc.

Acknowledgments

Information in this document is furnished only under a Customer License Agreement or non-disclosure agreement and may be used or copied only in accordance with the terms of such agreement. The software described in this document is protected by copyright and may not be copied on any medium except as specifically authorized in the license or non-disclosure agreement.

This document is also protected by copyright, and may not be reproduced or transmitted, in whole or in part, by any means, including photocopying, facsimile transmission, or reduction to any electronic medium or machine-readable form, without the express written consent of Sage Software, Inc.

Copyright 2026 Sage Software, Inc. All rights reserved.

Sage 500 ERP is a registered trademark of Sage Software, Inc. Other product names used in this document are trademarks or registered trademarks of their respective owners.

Contents

Disclaimer	4
Enhancements and Corrections.....	4
Enhancements.....	4
* Product Update 1	5
Installation Instructions	6
Installing the Server.....	6
Installing the Client.....	12

Disclaimer

Any prior customizations may be altered or overwritten upon installation of this product update. The user assumes all responsibility for corruption or loss of data.

Enhancements and Corrections

The following is a list of enhancements and corrections that have been incorporated into this Sage 500 ERP 2026 Product Update.

***Indicates a new enhancement or program fix in this Update. All new to Product Update 1 have been consolidated under one section "Product Update 1".**

Enhancements

SQL Server 2025 has been added to the Compatibility Guide. Because SQL Server 2025 was released after Sage 500 Version 2026, it was not included in the original guide. Following its release and successful testing, it is now listed as compatible

* Product Update 1

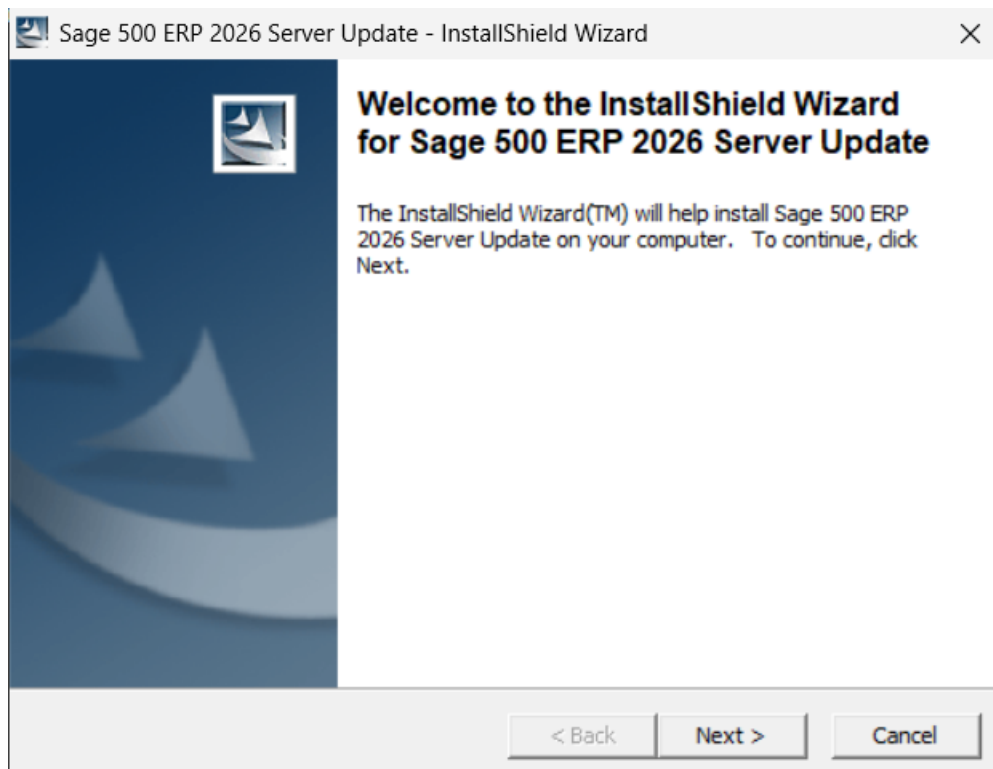
Issue ID	Module	Short Description	Objects Modified - Client	Object Modified - Database
50912	AP	1099 TY 2025 Compliance Release	ap1099FormsSvc.frm, ap1099FormsSvc.bas, ap1099FormsSvc.exe, ap1099SvcAtx.frm, ap1099FormsSvcLnch.dll	spapProcess1099_TaxSvc.sql, ap1099Update2025.sql
50908	AR	Error in Validating Address of Sage 500 customer	HTTPUtils.cs, HTTPUtilFx.csproj, encHelper.cs, HTTPUtilFx.dll, HTTPUtilFx.tlb, Newtonsoft.Json.dll, Newtonsoft.Json.xml	
50869	DI	Data Import Manager for SQL 2025 Compatibility	ImportJobMaintenance.vb, ImportJobMaintenance.vbproj, Accounting.Application.DI.ImportJobMaintenance.exe, PackageBuilder.vb, PackageBuilder.vbproj, Accounting.Application.DI.PackageBuilder.dll, SQLAgent.vb, SSISServices.vb, Accounting.Application.DI.PackageBL.dll, PackageBuilder170.vbproj, Accounting.Application.DI.PackageBuilder170.dll, Constants.vb, Accounting.Framework.Common.dll	
50914	DI	Data Import Manager Connecting to SQL Servers in Source Connection Manager	SourceConnectionMaintenance.vb, Accounting.Application.DI.SourceConnectionMaintenance.exe	

Installation Instructions

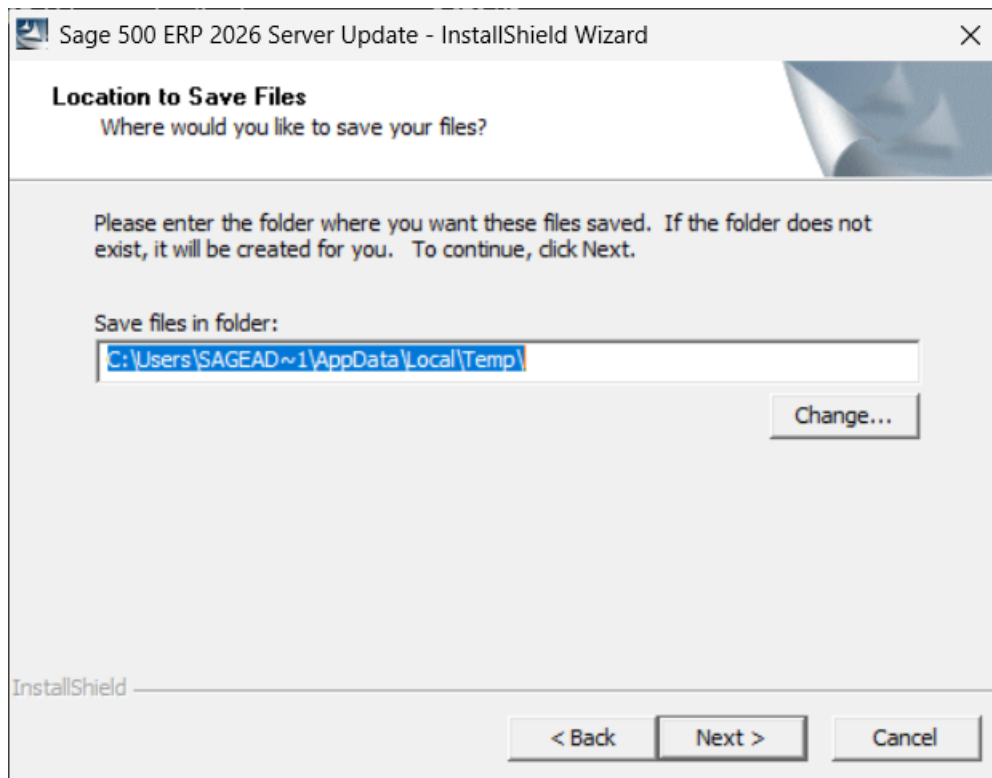
Installing the Server

Note: All users must log out of the Sage 500 ERP applications prior to installing the server update.

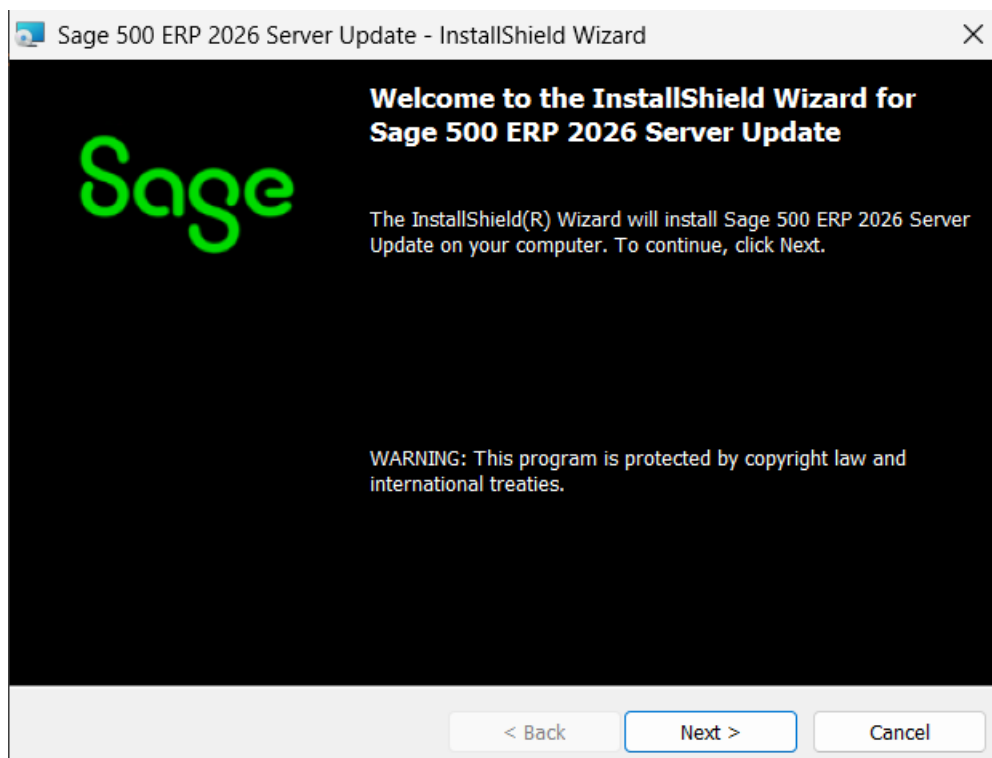
1. To begin the Sage 500 ERP 2026 Server installation, double-click **2026PU1S.exe** and click **Next** to proceed.



2. Indicate the location to which the installation files should be saved. Select the default location, or select **Change** to browse to a different location.



3. At the welcome screen, select **Next** to continue, or **Cancel** to exit setup.



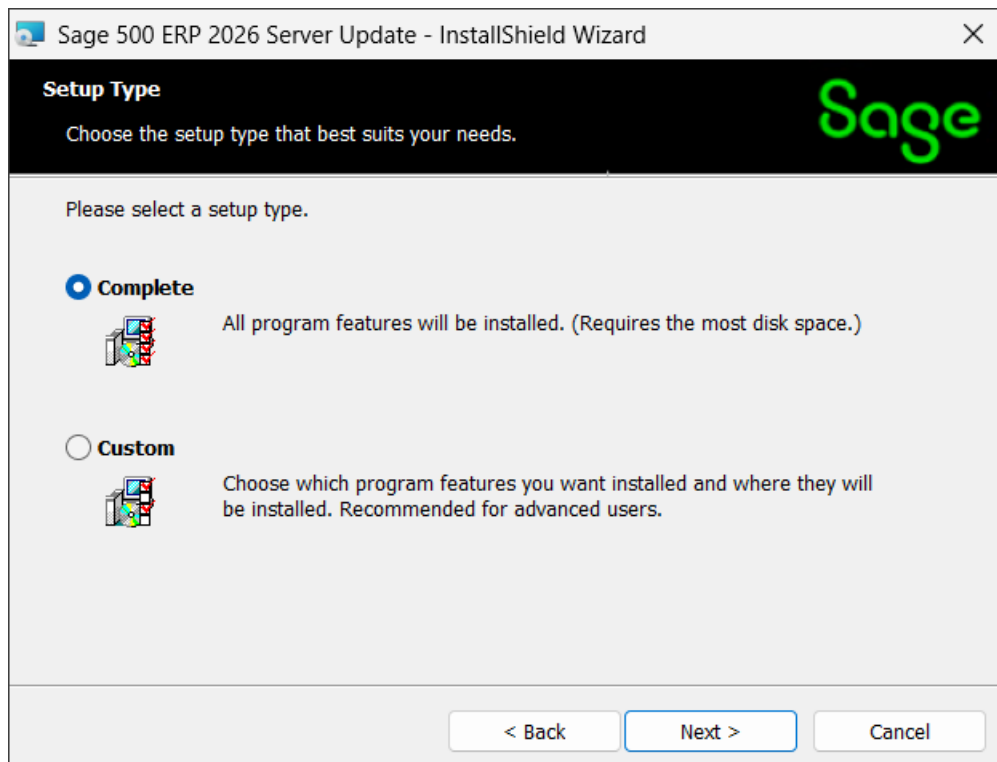
4. Read the License Agreement, select the Accept option and click **Next** to continue.

The screenshot shows a window titled "Sage 500 ERP 2026 Server Update - InstallShield Wizard". The window has a black header bar with the Sage logo on the right and the text "License Agreement" and "Please read the following license agreement carefully." on the left. The main content area is titled "Sage End User License Agreement" and contains the following text: "This Agreement governs the use of the Software set forth in Customer's Order Form and any Service Plan Customer elects to purchase with respect to that Software." Below this is a bolded paragraph: "BY DOING ONE OR MORE OF THE FOLLOWING (OR ALLOWING OR AUTHORIZING A THIRD PARTY TO DO SO ON CUSTOMER'S BEHALF), CUSTOMER SHALL BE DEEMED TO HAVE ACCEPTED AND ENTERED INTO THIS AGREEMENT WITH SAGE AND ANY ADDITIONAL TERMS AND CONDITIONS REQUIRED BY THIRD-PARTY PROVIDERS BY: (1) CLICKING 'AGREE,' 'OK', OR A SIMILAR AFFIRMATION THAT APPEARS DURING ACTIVATION OF THE SOFTWARE OR PRIOR TO THE USE OF THE SOFTWARE (2) SIGNING THIS AGREEMENT OR (3) USING THE SOFTWARE IF". At the bottom of the main content area, there are two radio buttons: "I accept the terms in the license agreement" (which is selected) and "I do not accept the terms in the license agreement". To the right of these radio buttons is a "Print" button. At the bottom of the window, there are three buttons: "< Back", "Next >", and "Cancel".

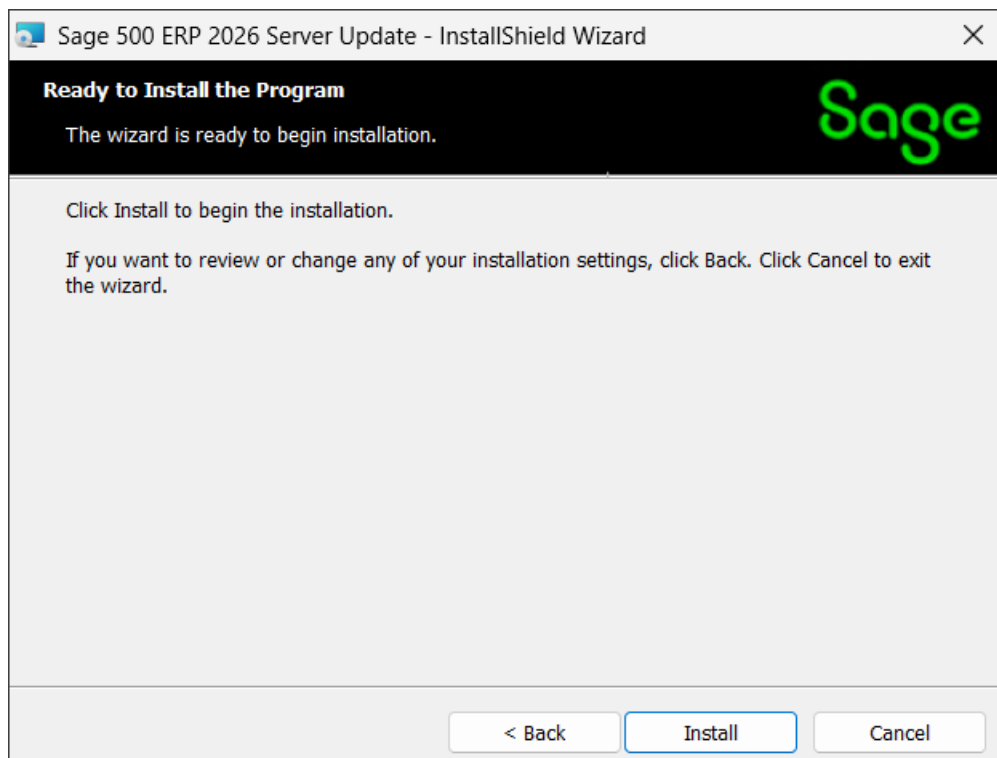
5. Enter the User Name, Organization, and click **Next** to continue.

The screenshot shows a window titled "Sage 500 ERP 2026 Server Update - InstallShield Wizard". The window has a black header bar with the Sage logo on the right and the text "Customer Information" and "Please enter your information." on the left. The main content area contains two text input fields. The first field is labeled "User Name:" and contains the text "Sage". The second field is labeled "Organization:" and contains the text "Sage Software". At the bottom of the window, there are three buttons: "< Back", "Next >", and "Cancel".

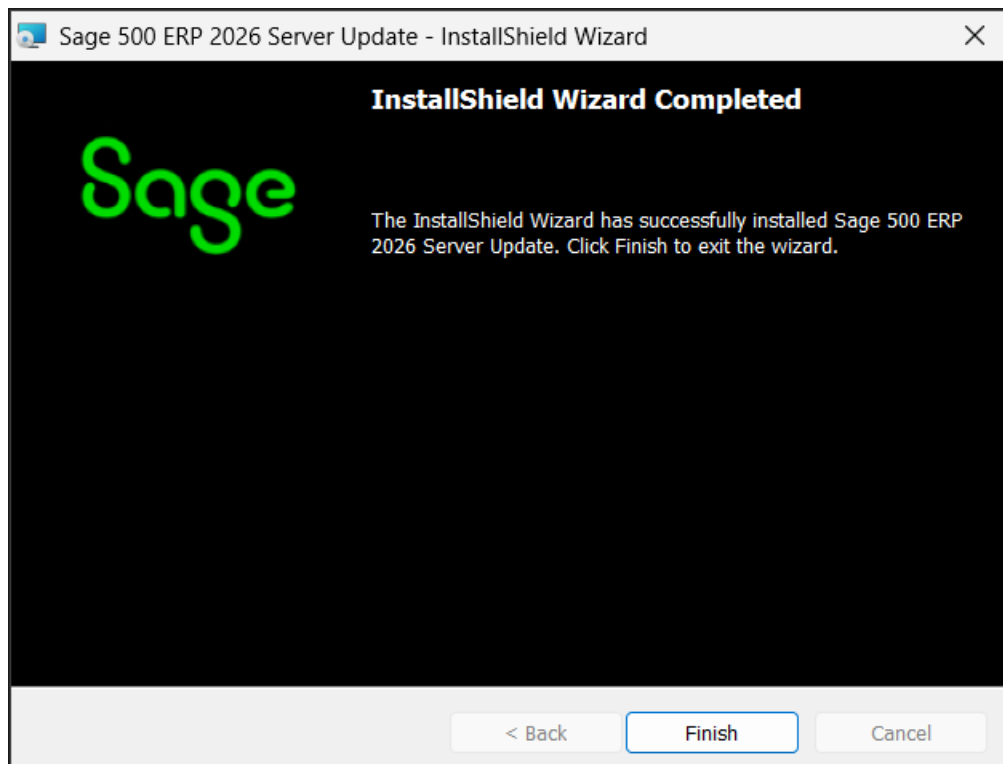
6. Select **Complete** and click **Next** to continue.



7. Click **Install** to continue.



8. At the completion screen, click **Finish** to complete the Sage 500 ERP Server installation.

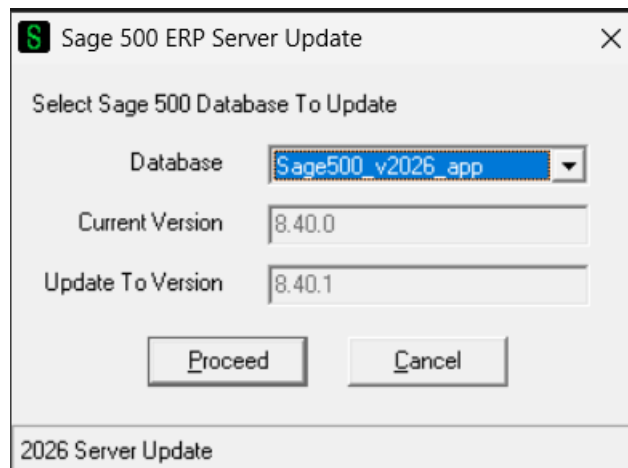


9. If you receive a message to restart the system, click **Yes** to continue. After the system has been restarted, select **Sage 500 ERP 2026 Product Update 1** from the Sage 500 ERP 2026 program group.

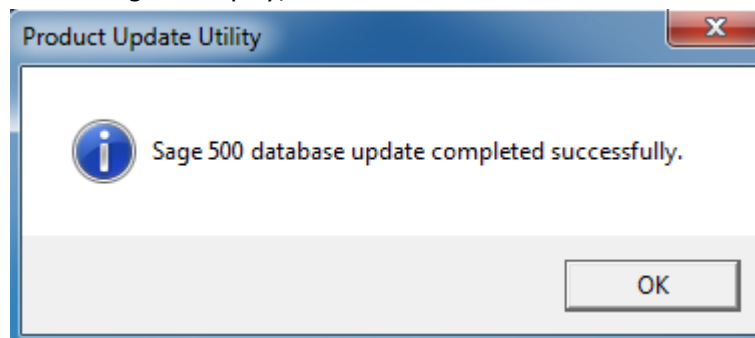
10. Enter the SQL Server Name and SQL Server sa password, select **Proceed** to continue.



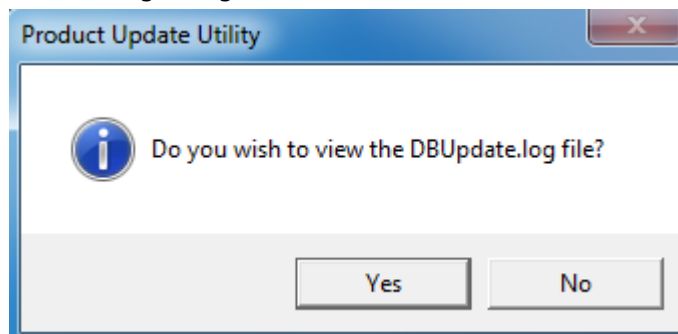
11. Enter the name of the Sage 500 ERP Application Database and select **Proceed** to continue.



12. This confirmation dialog will display; select **OK** to continue.

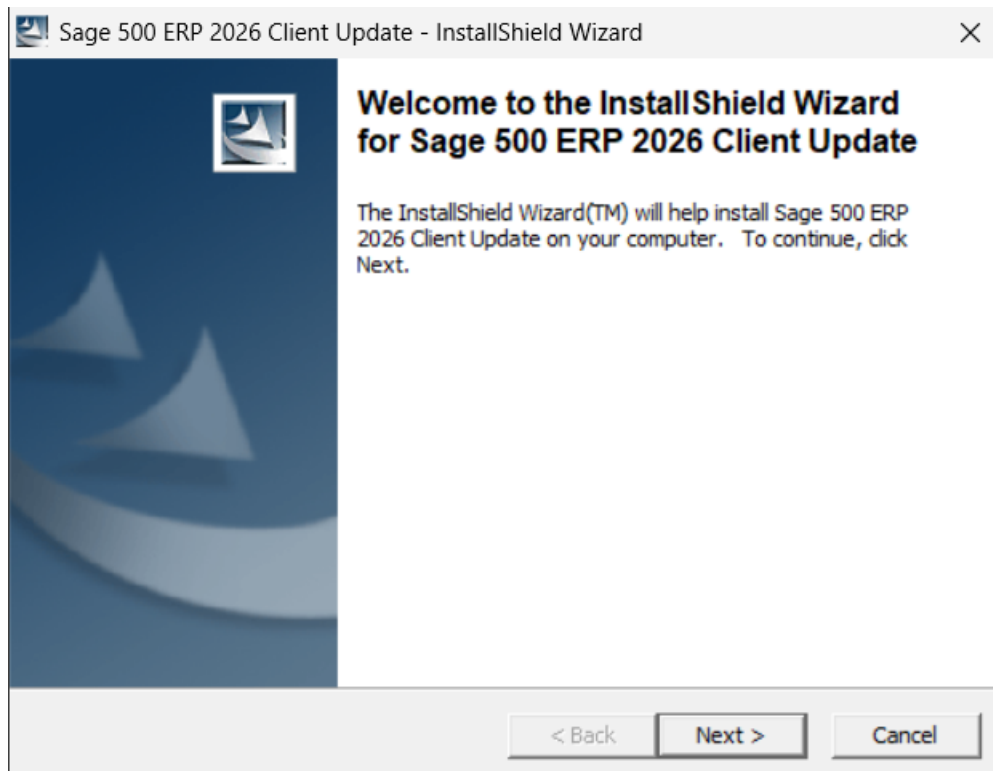


13. After applying the update to the Sage 500 ERP Database, you may view the updates by clicking **Yes** at the following dialog box:

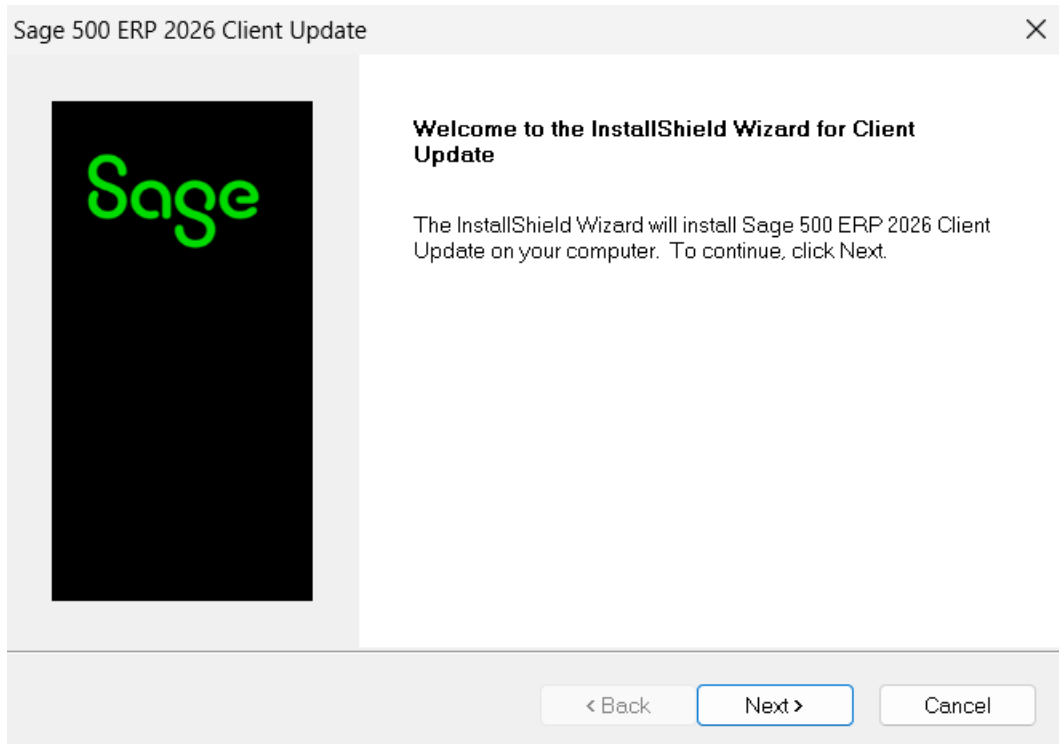


Installing the Client

1. To begin the Sage 500 ERP 2026 Client installation, double-click the **2026PU1C.exe**. A screen similar to the one below will display, click **Next** to proceed.



2. At the Welcome screen, click **Next** to continue.



3. At the completion screen, click **Finish** to complete the Sage 500 ERP Client update installation.

